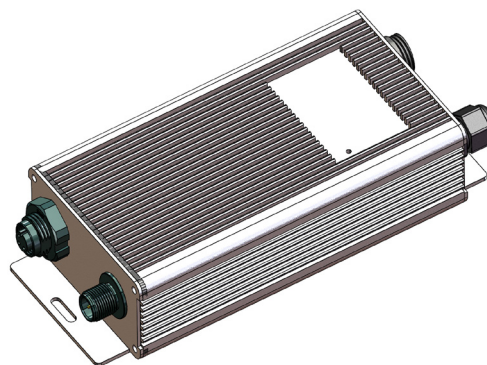




EOS SY Series DC Driver

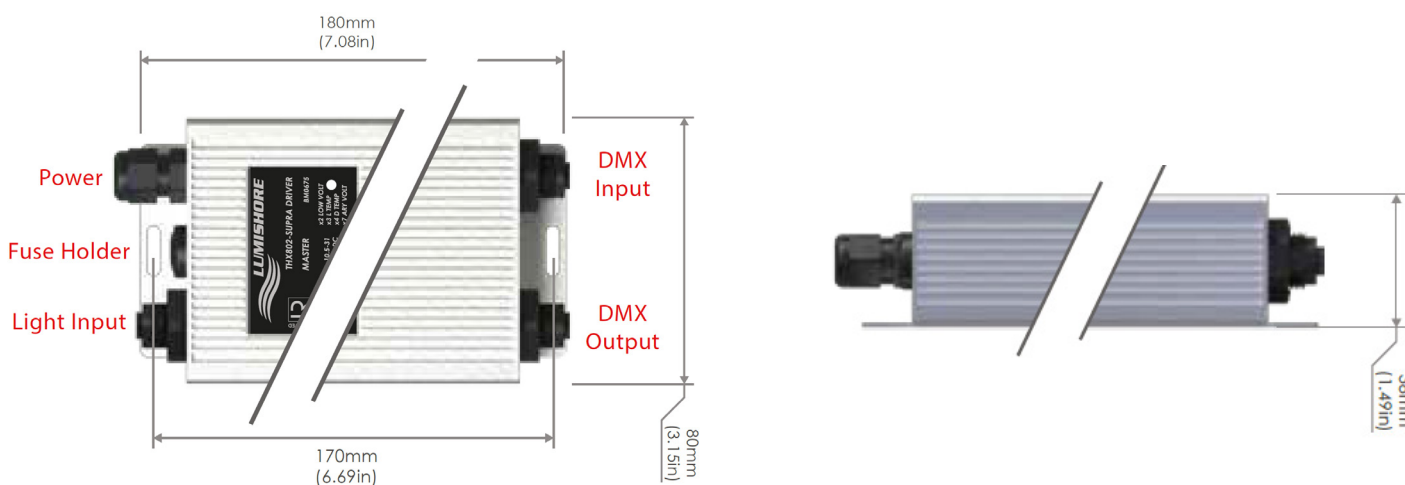
SY220 / SY225 / TRX 802

SY WELD-IN UNDERWATER LED LIGHT DRIVER



Available Colors	Full EOS Colour Change (RGBW)
For Use With	SY220 / SY225 / TRX802 EOS Series Lights
Warranty	3 Years*
User Control Options	Lumishore Controller (2203i or 2204i) DMX Controller (3rd Party)

*Subject to commissioning review



EOS SY Series DC Driver

SY220 / SY 225 / TRX802

SY WELD-IN UNDERWATER LED LIGHT DRIVER



TECHNICAL

Driver	External Driver
Supply Voltage Range	24 VDC
Max Current Draw	TRX 802 - 3.0 A SY 220 - 4.2 A SY 225 - 5.0 A
Heat Dissipation	TRX802 - 8 W SY 220 - 10 W SY225 - 12 W
Surge Protection	Yes (3,000V)
ATRB (Automatic Thermal Roll-Back)	Yes
Low Voltage Protection	Automatic Voltage Roll-Back Control, and Low Voltage Cut-Out
Auto Power Control	Yes - Intelligent Multi-Channel Power Mgmt
“Soft Start” Electronics Protection	Yes
Reverse Polarity Protection	Yes
In Rush Current Protection	Yes
Power Line Noise Suppression	Yes
Communication Protocol	Lumi-DMX (DMX-512/RDMX Compatible)
No. of DMX Addresses per Driver	5

PHYSICAL

Ingress Protection	IP 67
Weight	0.6 Kg
Size - not including connectors (LxWxH)	180mm x 80mm x 38mm (7.1" x 3.2" x 1.5")
Max cable length from driver to light	Up to 13m total

LIGHTING SYSTEM FUNCTIONALITY

Manufacturer Preset Colors	Yes
Lights Synchronized (All Lights, All Colors, All Models)	Yes
Color Cycle	Yes
Cycle Speed Adjust	Yes
Color Sweep	Yes
Color Sweep Speed Adjust	Yes
Customizable Favorites	Yes
Fixed Strobe (Any Color)	Yes
Random Strobe Mode (Any Color)	Yes
Customizable Strobe Mode	Yes
Programmable Scenes	Yes
Wi-Fi Control	Yes
External DMX/RDMX	Yes
Individually Addressable Lights	Yes
Sound-To-Light	Yes
Groups	Yes
Automatic Light Discovery and Setup	Yes
Light Brightness Adjustment	Yes
Diagnostic Function	Yes

PART NUMBERS

TRX802 EOS DC Driver	28-0074
SY220 EOS DC Driver	28-0073
SY225 EOS DC Driver	28-0102